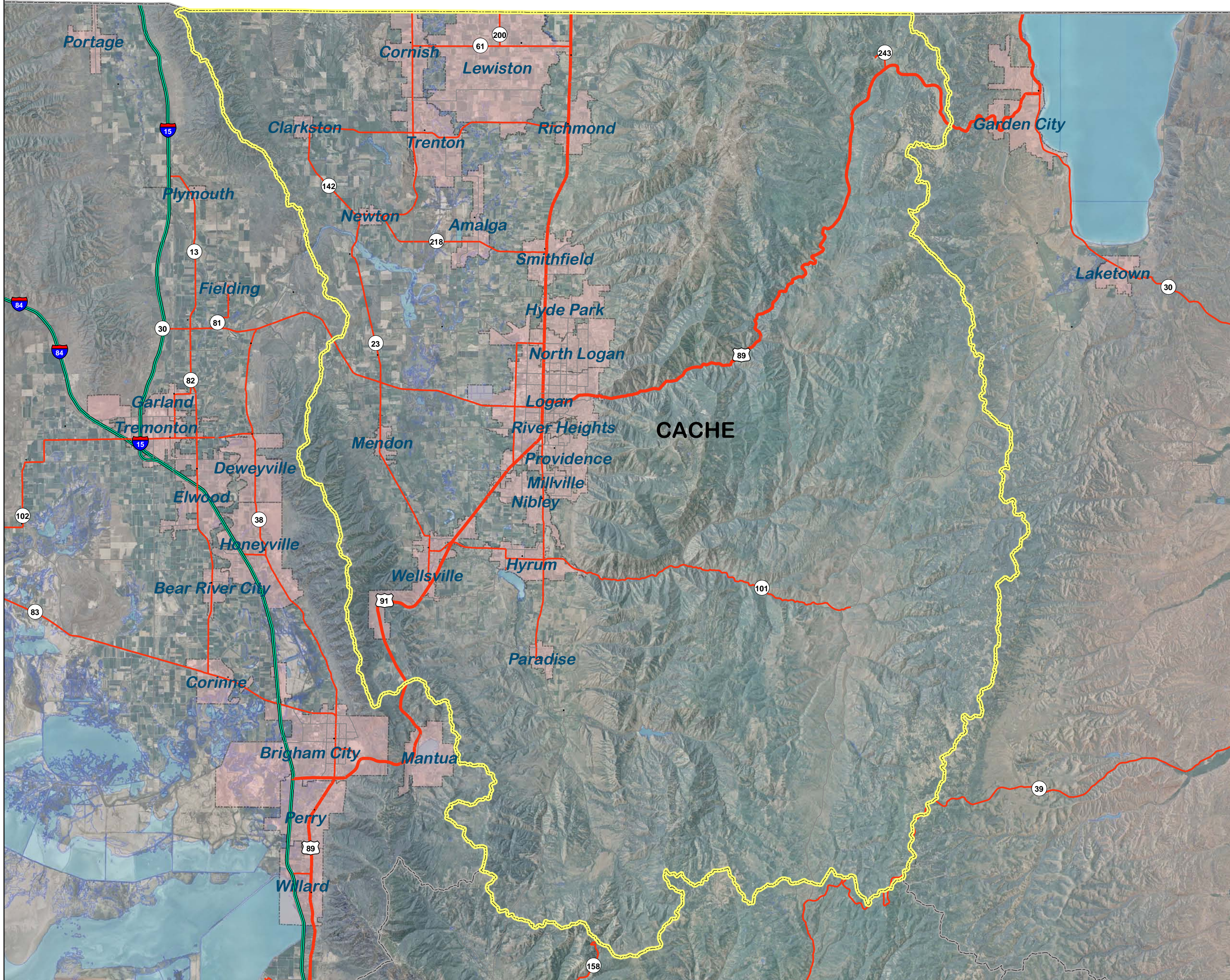
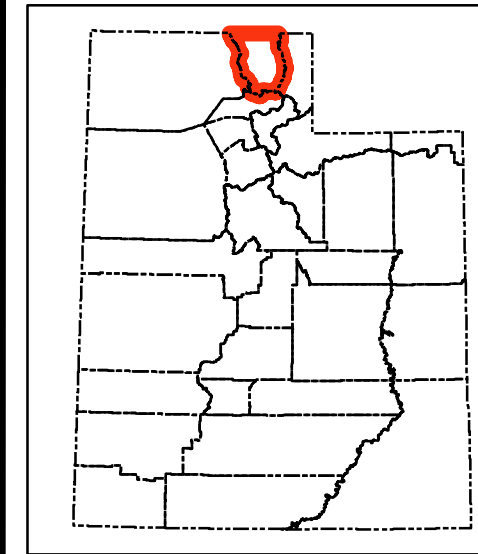


IDAHO



Location Map



Legend

- Selected County
- County Boundaries
- Municipalities
- Utah Streets & Roads**
- Freeway
- US Highway
- State Highway
- Local

Description

The geographic boundaries of Cache County are described as follows:  
 Beginning at the intersection of the northern boundary of the state and the summit of the watershed separating the Cache and Bear Lake Valleys, thence west along the said boundary to the summit of the range next east of Malad Valley; thence southerly along the summit of the last mentioned range crossing the Bear River at the middle point of its lower canyon to, and thence along, the summit of the Wasatch Range, passing round the headwaters of Box Elder and Willow Creeks; and thence easterly along the summit of said range to its intersection with, and thence northerly along, the summit of the watershed between the Cache and Bear Lake Valleys to the point of beginning.

Narrative

This map has been created to fulfill the requirements under Section 17-50-104, State of Utah Code: Counties of the state – County boundaries maintained by Lieutenant Governor. The counties of the state are those whose geographic boundaries are described in the official county boundary records maintained by the office of the lieutenant governor and may be changed only in accordance with the provisions of this title. The office of the lieutenant governor shall maintain the official county boundaries for the counties of the state and update those boundaries upon the lieutenant governor's issuance, under Section 67-1a-6.5, of an applicable certificate, as defined in that section. The county boundary described on this map has been created from the original county description. If changes have been made to the county boundary in accordance with the provisions outlined in state code, the changes are shown in the graphic representation of the boundary; the calls from the boundary adjustment plat have been added to the original description and a reference to the certification document points to the area of change. This map provides a general graphic location of the boundary without being tied to the ground using the Public Land Survey System. If more accurate information is needed, a ground survey is required.

Certification

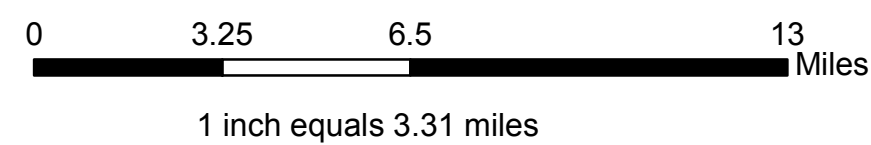
I Sean A. Fernandez, Professional Land Surveyor, as prescribed by the laws of the State of Utah and holding license No. 312775 do hereby certify: That this map was prepared by me or under my direction together with the best available data; That due care was exercised in preparing this map; That this map is a geographic representation of the County Boundary to the best of my knowledge and conviction.

**DRAFT**

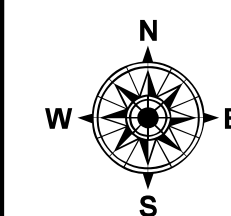
**Greg Bell**  
LIEUTENANT GOVERNOR

Utah State Capitol  
Suite 220  
Salt Lake City UT 84114

[elections@utah.gov](mailto:elections@utah.gov)



**Sean A. Fernandez PLS**  
STATE CADASTRAL SURVEYOR  
Automated Geographic Reference Center (AGRC)  
1 State Office Building, Rm 5130  
Salt Lake City, Ut 84114  
<http://gis.utah.gov>



**Cache County Boundary Map**

Drawn By: Mike Heagin      Checked by: Sean Fernandez PLS

Print Date: May 5, 2010